



Dati tecnici - Technical data

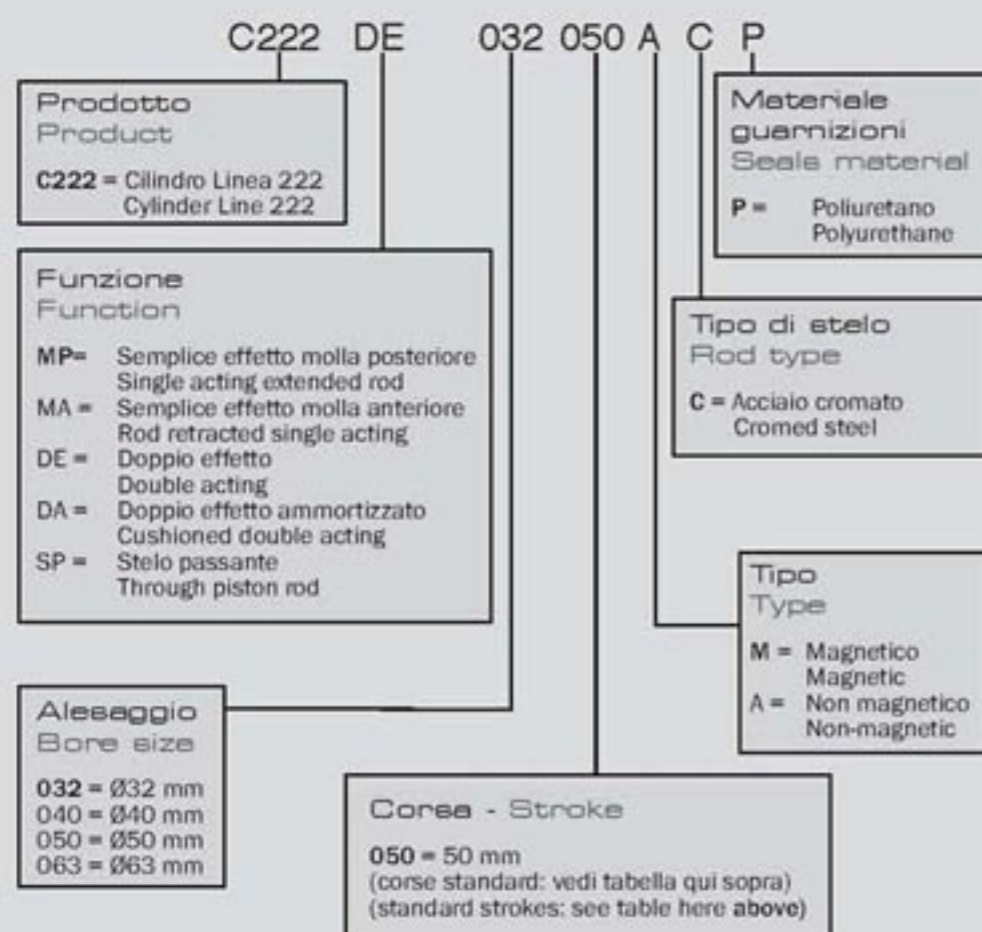
Fluido - Fluid	aria filtrata con o senza lubrificazione - filtered air with or without lubrication	
Temperatura d'esercizio - Temperature range	0 °C (-20 °C con aria secca) / 80 °C - 0 °C (-20 °C with dry air) / 80 °C	
Pressione di esercizio - Working pressure	Min. 1 Bar / Max 10 Bar	
Lubrificazione - Lubrication	Con aria lubrificata, la lubrificazione deve essere continua - Lubrication, if used, must be continuous	
Materiali - Materials	Camicia: AISI 304 Stelo: acciaio C40 Testate: allumino anodizzato Guarnizioni: Poliuretano	Barrel: AISI 304 stainless steel Piston rod: C40 steel Heads: anodized aluminium Sealings: Polyurethane

Corse standard - Standard strokes (mm)

Alesaggio - Bore size	10	25	50	80	100	125	160	200	250	320	400	500
32	▲●	▲●■	▲●	●■	●■	●■	●■	●■	●■	●■	●■	●■
40	▲●	▲●■	▲●	●■	●■	●■	●■	●■	●■	●■	●■	●■
50	▲●	▲●■	▲●	●■	●■	●■	●■	●■	●■	●■	●■	●■
63	▲●	▲●■	▲●	●■	●■	●■	●■	●■	●■	●■	●■	●■

▲ MP semplice effetto molla posteriore - single acting extended rod
 MA semplice effetto molla anteriore - rod retracted single acting

● DE doppio effetto - double acting
 ■ DA doppio effetto ammortizzato - cushioned double acting

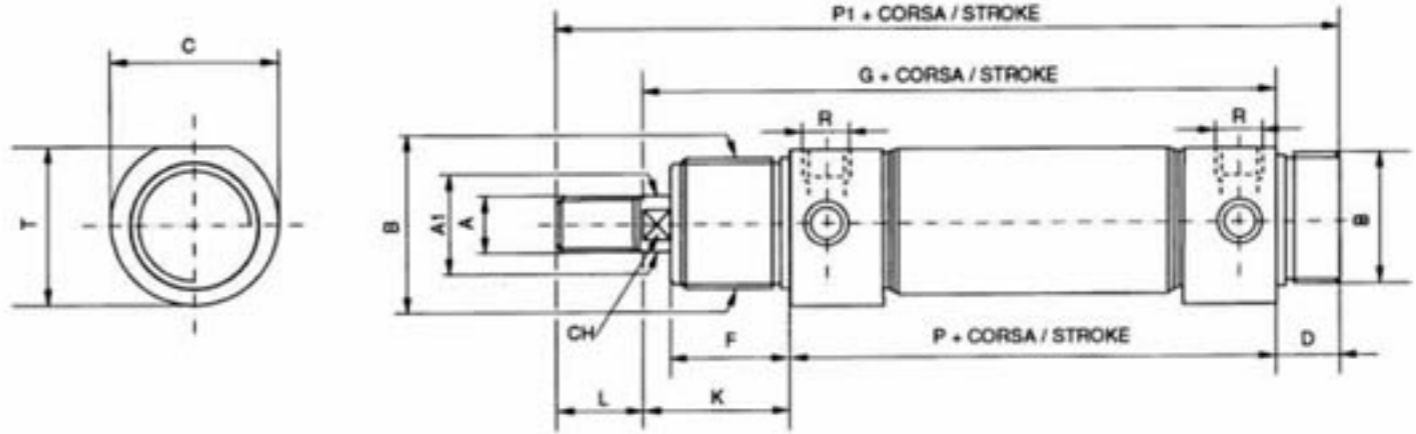
Codici di ordinazione
Order codes

Il cilindro Tondo serie 222 è caratterizzato da un design essenziale, dimensioni particolarmente contenute. La gamma offerta comprende gli alesaggi 32, 40 e 63 mm, completando così il programma del Cilindro Serie 220 protagonista invece nelle applicazioni che richiedono alesaggi inferiori.

The round cylinder line 222 is characterized by essential design and very compact size.

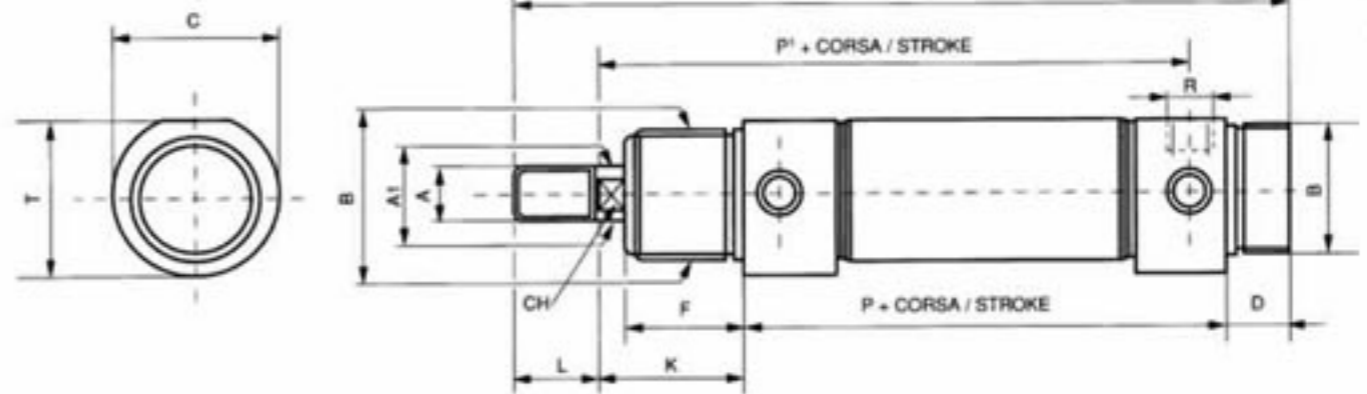
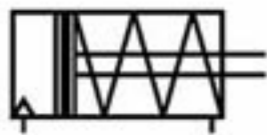
The products range includes bore sizes 32, 40 and 63 mm, so this completes the cylinder line 220 program, which has instead the leading role in applications which requires lower bore sizes.

Cilindro tondo Linea 222 - doppio effetto deammortizzato
Round cylinders Line 222 - double acting cushioned

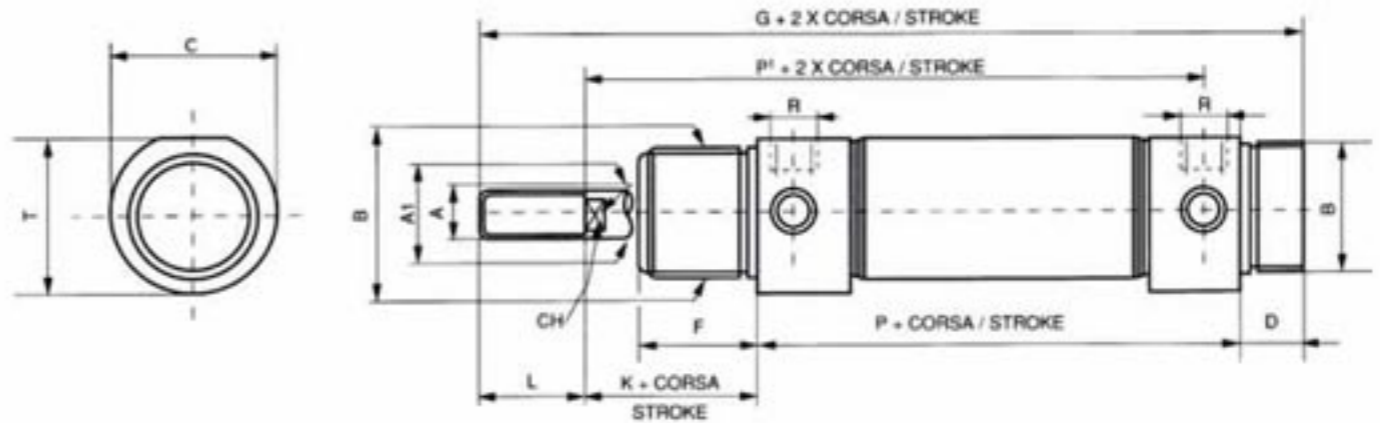


Dimensioni - Dimensions (mm)														
\varnothing	A	A1	B	T	C	D	F	G	K	L	P	P1	CH	R
32	M10x1.25	12	M30x1.5	36.5	38	14	30	134	38	20	96	168	10	1/8" GAS
40	M12x1.25	16	M38x1.5	44	46	16	35	156	45	24	111	196	12	1/4" GAS
50	M16x1.5	20	M45x1.5	55	57	18	38	170	50	32	120	220	16	1/4" GAS
63	M16x1.5	20	M45x1.5	67.5	70	18	38	174	50	32	124	224	16	3/8" GAS

Cilindro tondo Linea 222 - semplice effetto molla anteriore
Round cylinders Line 222 - single acting retracted rod

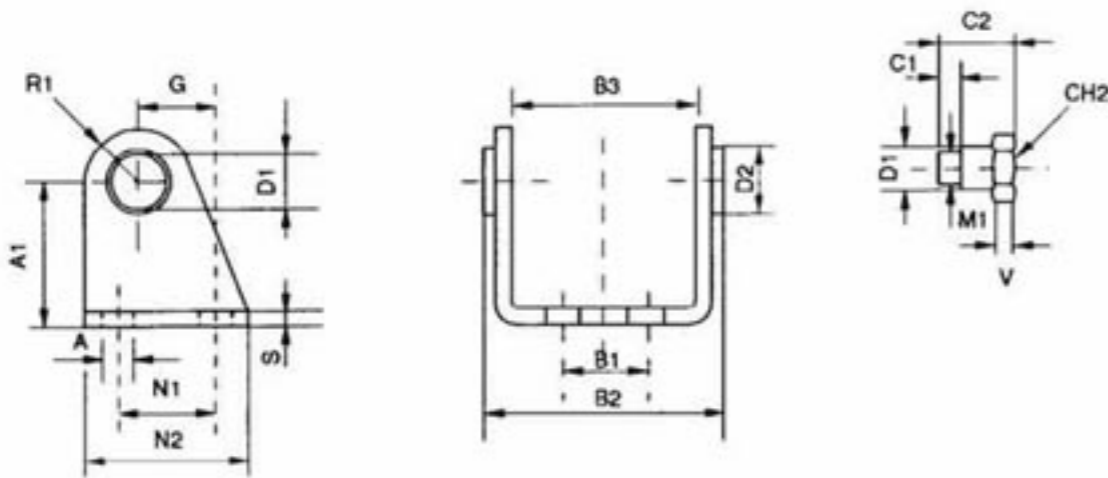


Cilindro tondo Linea 222 - semplice effetto molla posteriore
Round cylinders Line 222 - single acting extended rod



Dimensioni - Dimensions (mm)														
\varnothing	A	A1	B	T	C	D	F	G	K	L	P	P1	CH	R
32	M10x1.25	12	M30x1.5	36.5	38	14	30	168	38	20	96	125	10	1/8" GAS
40	M12x1.25	16	M38x1.5	44	46	16	35	196	45	24	111	144	12	1/4" GAS
50	M16x1.5	20	M45x1.5	55	57	18	38	220	50	32	120	158	16	1/4" GAS
63	M16x1.5	20	M45x1.5	67.5	70	18	38	224	50	32	124	161	16	3/8" GAS

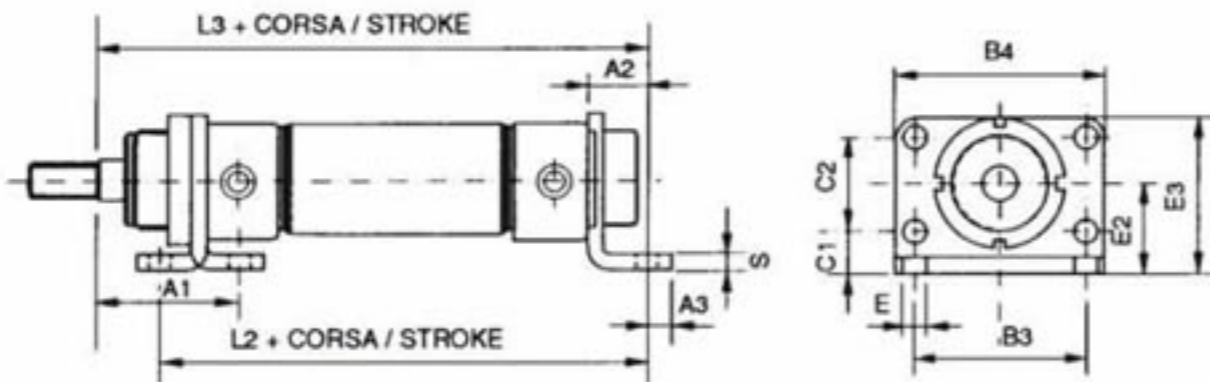
Kit controcerniera Counter-hinge kit



Dimensioni - Dimensions (mm)

CODE	Ø	D1	D2	A	A1	G	M1	N1	N2	R1	S	CH2	B1	B2	B3	V	C1	C2
222A032001	32	10	16	7	35	20	M8x1	24	40	12	4	13	20	50.1	38.1	4	6	18
222A040001	40	12	18	9	40	27	M10x1	30	50	13	5	17	28	60.1	46.1	5	7	21.6
222A050001	50	14	23	9	45	30	M12x1.5	34	54	14	6	19	36	74.1	57.1	6	9	26.4
222A063001	63	16	24	9	50	34	M14x1.5	35	65	16	6	19	42	88.1	70.1	6	15	34

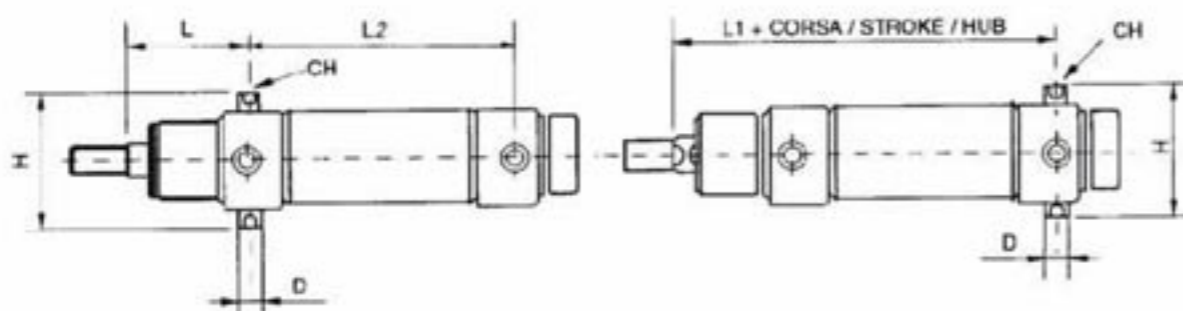
Piedino Foot



Dimensioni - Dimensions (mm)

CODE	Ø	E	E2	E3	C1	C2	L2	L3	B3	B4	S	A1	A2	A3
222A032002	32	7	28	49	14	28	124	148	52	66	4	48	14	7
222A040002	40	9	33	58	18	30	151	176	60	80	5	60	20	10
222A050002	50	9	40	70	20	40	160	190	70	90	6	64	20	10
222A063002	63	9	45	80	20	50	164	194	76	96	6	65	20	10

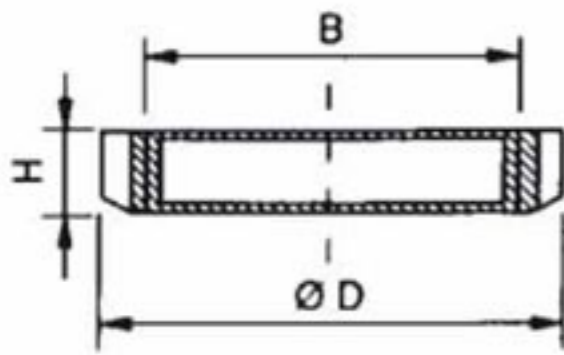
Kit perni fissaggio Fixing pivot kit



Dimensioni - Dimensions (mm)

CODE	Ø	D	H	L1	L2	L	CH
222A032003	32	10	51	125	78	47	5
222A040003	40	12	61	144	87	57	6
222A050003	50	14	75	158	96	62	6
222A063003	63	16	90	161	98	63	8

Ghiera
Nut

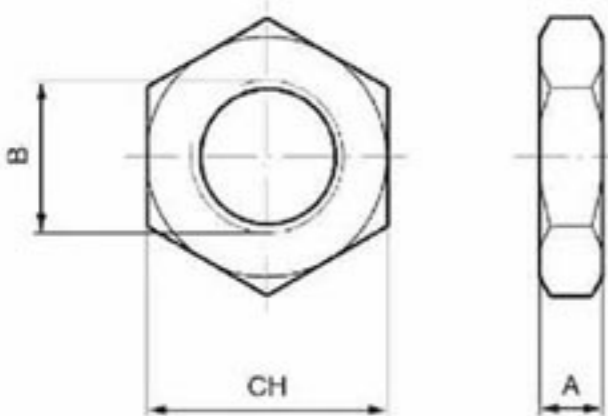


Dimensioni - Dimensions (mm)

CODE	\varnothing	B	D	H
222A032004	32	M30x1.5	45	7
222A040004	40	M38x1.5	50	8
222A050004	50-63	M45x1.5	58	9



Dado per stelo
Nut for rod

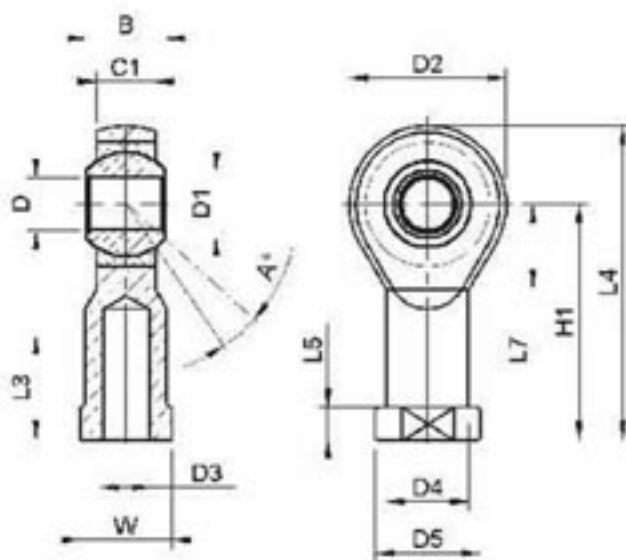


Dimensioni - Dimensions (mm)

CODE	\varnothing	A	B	CH
240A032013	32	6	M10x1.25	17
220A008004	40	7	M12x1.25	19
220A012004	50-63	8	M16x1.25	24



Giunto a snodo
Swivel joint

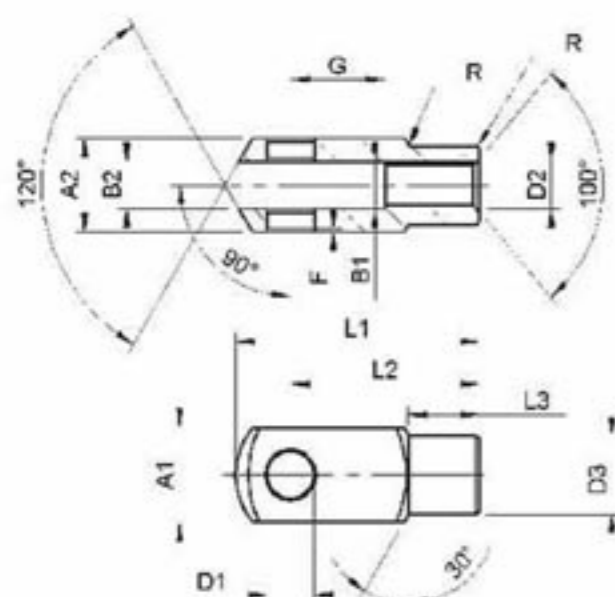


Dimensioni - Dimensions (mm)

CODE	\varnothing	B	C1	D	D1	D2	D3	D4	D5	DK	H1	L3	L4	L5	L7	W
240A032004	32	14	10,5	10	12,9	28	M10	15	19	19,05	43	20	57	6,5	15	17
240A040004	40	16	12	12	15,4	32	M12	17,5	22	22,22	50	22	66	6,5	17	19
240A050004	50-63	21	15	16	19,3	42	M16	22	27	28,57	64	28	85	8	23	22



Forcelle
Rod forks



Dimensioni - Dimensions (mm)

CODE	\varnothing	A1	A2	B1	B2	D1	D2	D3	F	G	L1	L2	L3	R
240A032002	32	20	20	10	10	10	M10x1,25	18	0,5	20	52	40	15	0,5
240A040002	40	24	24	12	12	12	M12x1,25	20	0,5	24	62	48	18	0,5
240A050002	50-63	32	32	16	16	16	M16x1,50	26	1,0	32	83	64	24	1,0

